

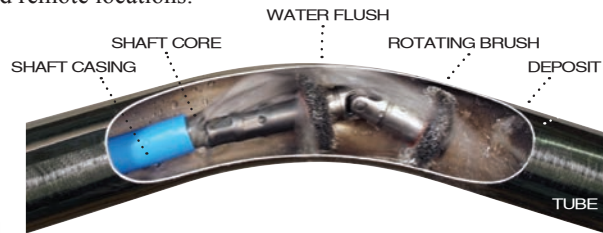
Clean Tubes In Tight Locations

THE AWT-100 IS THE AIR POWERED SOLUTION FOR BETTER SYSTEM PERFORMANCE.



AWT-100 – Compact and Powerful

For situations where electricity is not available or desirable, the air-powered AWT-100 is up to the task. With the appropriate cleaning tool attached, the flexible shaft will loosen unwanted deposits while the shaft casing provides water to flush out the loosened debris for better system efficiency. The unit also does double duty as a dry tube cleaner when accompanied by a Dry Pickup Attachment and Vacuum. (See pages 56-57 for details on the Dry Pickup Attachment and Vacuum.) Both portable and lightweight, the AWT-100 is perfect for tight spaces and remote locations.



AWT-100

Air Powered Tube Cleaner, including adjustable speed/torque control, quick connect air and water fittings, and single-direction foot switch

Note: See pages 32-41 and 49 for shafts and accessories.

ASH-B50-A

Air Supply Hose, 1/2" x 50'

Recommended:

For better air regulation and quality, plus longer motor life, we recommend the combination air lubricator, filter and regulator unit.

GTC-705-4

Combination Air Lubricator, Filter and Regulator (see page 35)



FEATURES

- > Air powered
- > Compact
- > Speed/torque control to set shaft rotation to optimum speed for each application
- > Quick connect threadless shaft manifold
- > Interchangeable cleaning tools
- > Simultaneous water flush
- > Foot switch activation

Specification	AWT-100
Motor Power	Up to 1.5 HP depending upon air pressure and volume
Air Requirements	Minimum 60 PSI at 15 CFM, Maximum 100 PSI at 70 CFM
Flexible Shaft Speed	Adjustable, 500-3,000 rpm
Water Requirements	Minimum 30 PSI at 2 GPM
Dimensions	10 3/8" high x 6" wide x 19" deep
Weight	29 lbs net dry



GOODWAY
Innovative Maintenance Solutions

Call Us With Your Dirt: 1-800-333-7467

Goodway Technologies Corporation

420 West Avenue, Stamford, CT 06902-6384 U.S.A.

T: 203-359-4708 • F: 203-359-9601 • E: goodway@goodway.com

www.goodway.com